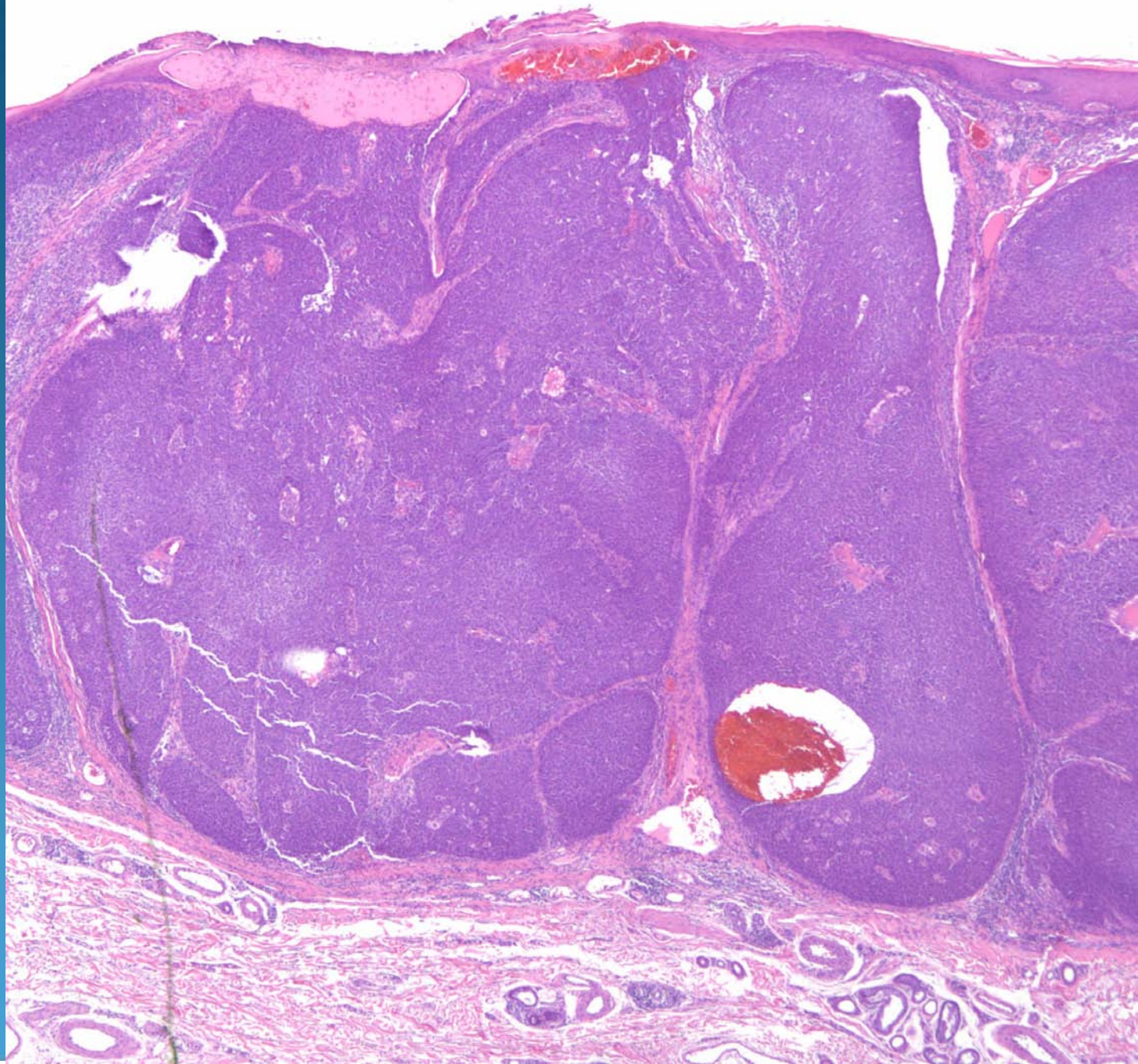
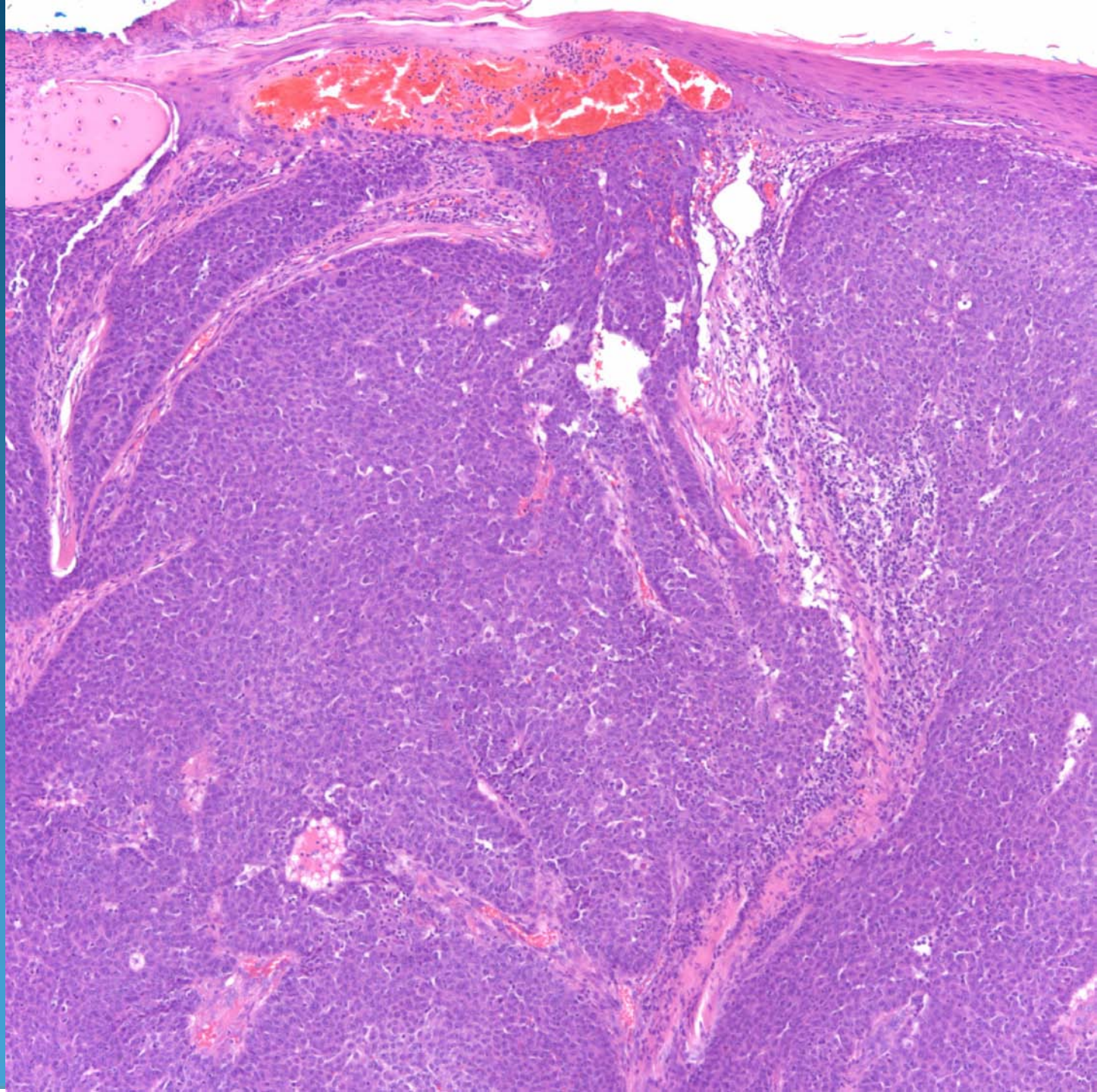


# Dermatopathology Slide Review Part 55

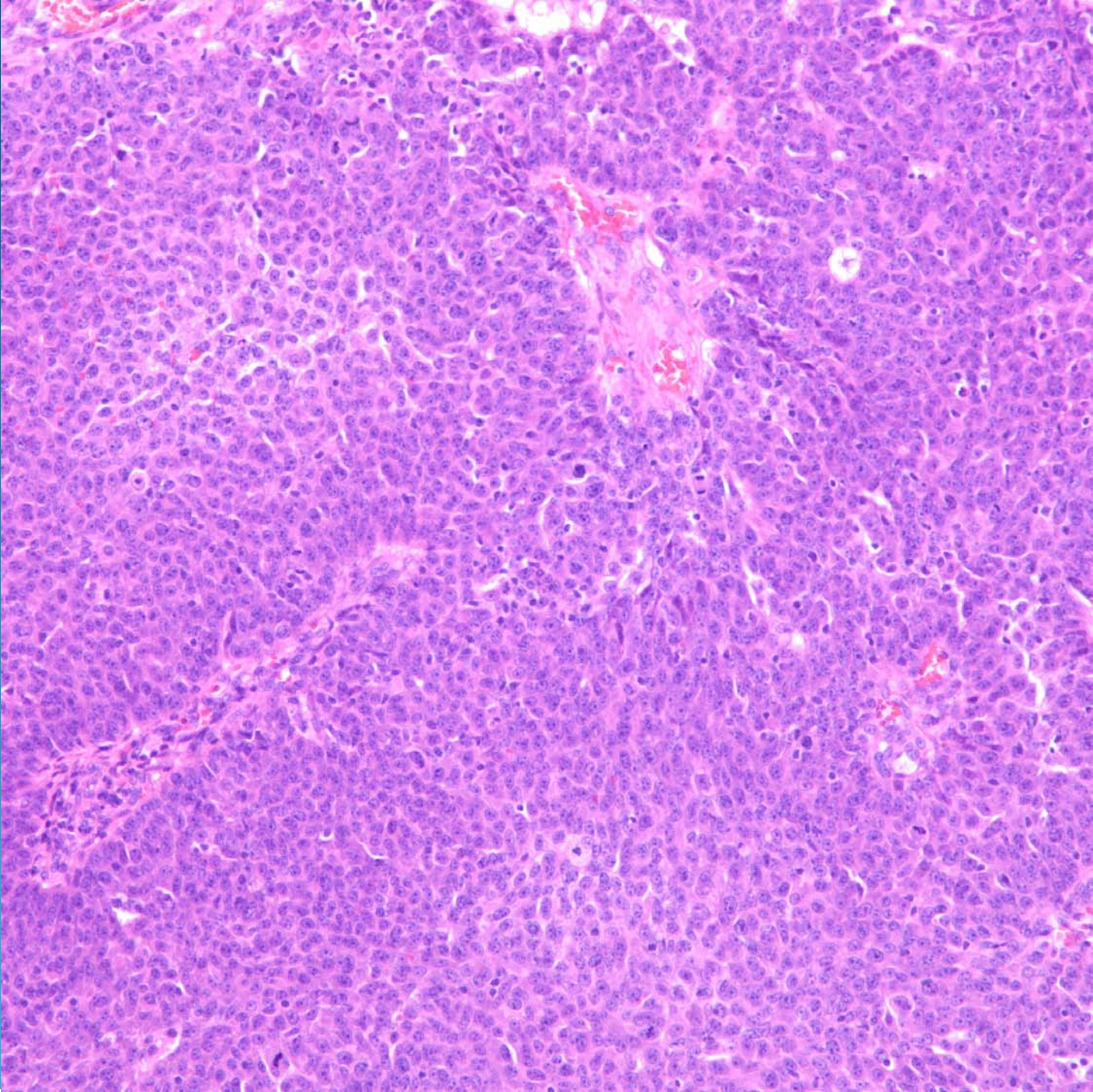
Paul K. Shitabata, M.D.  
Dermatopathology Institute



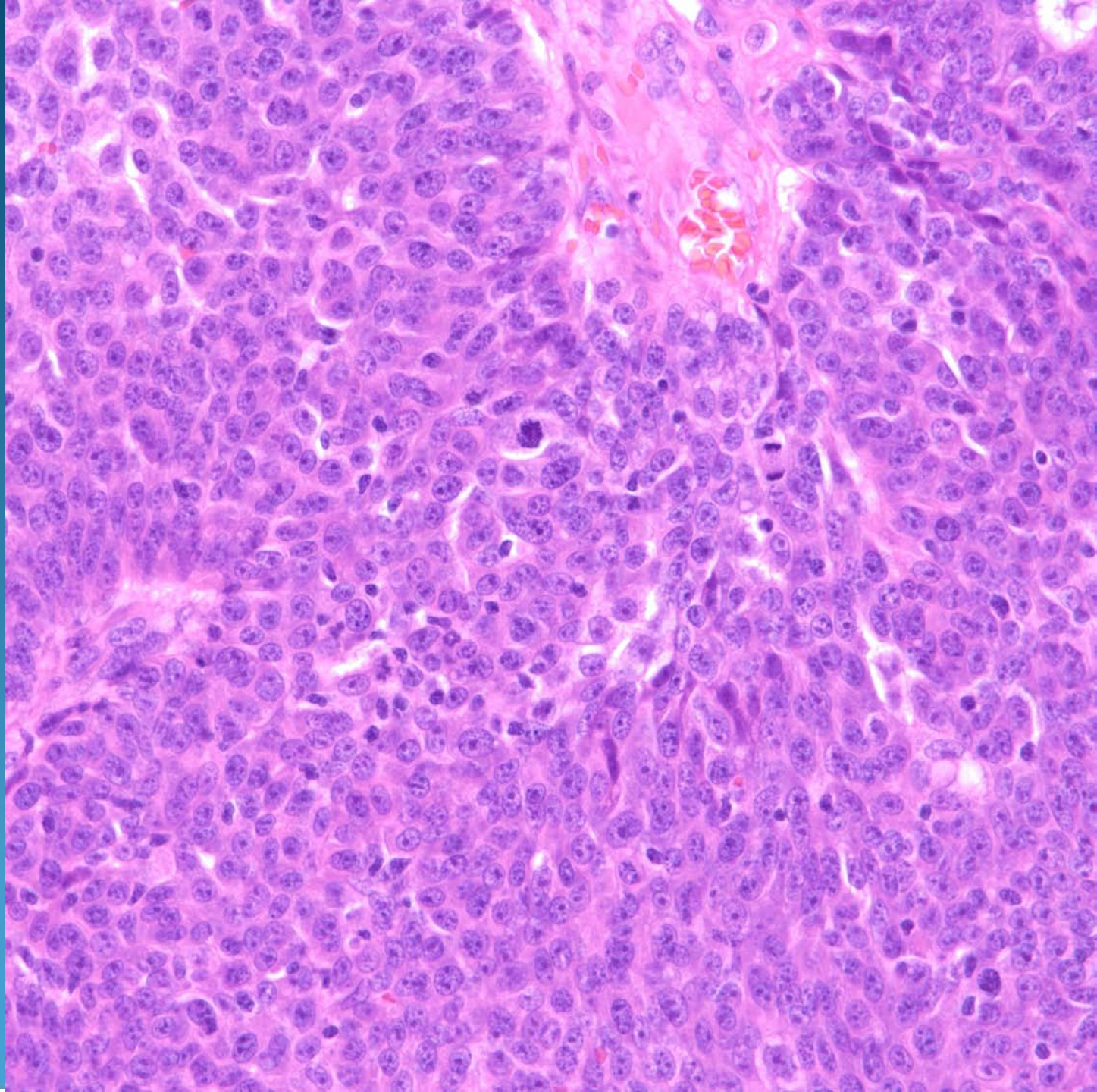








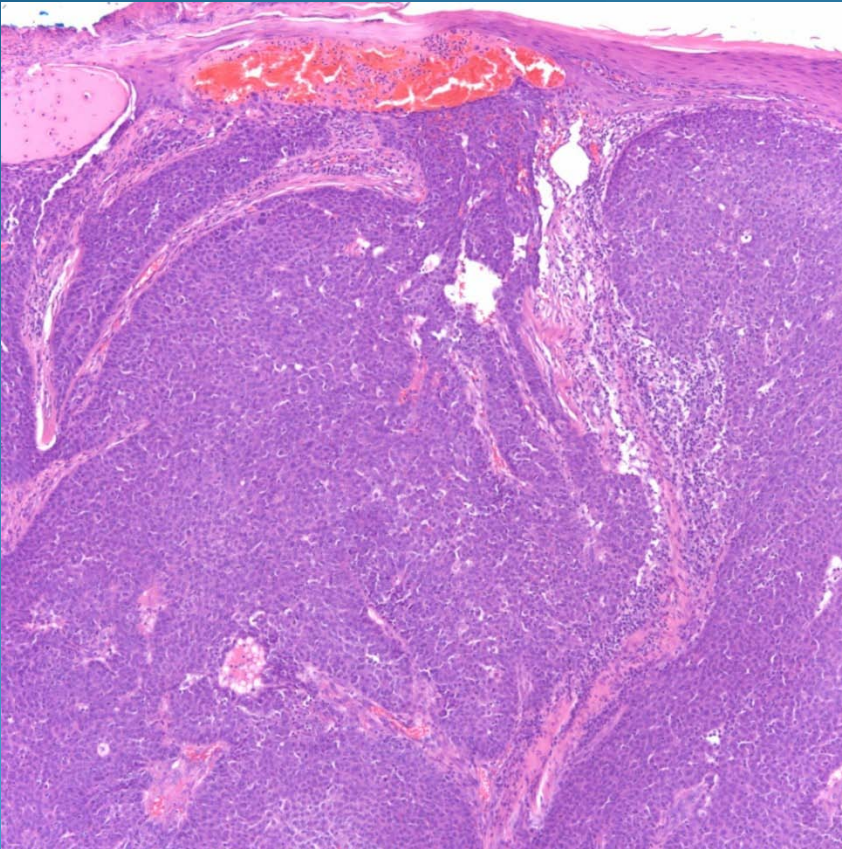




# Eccrine Porocarcinoma

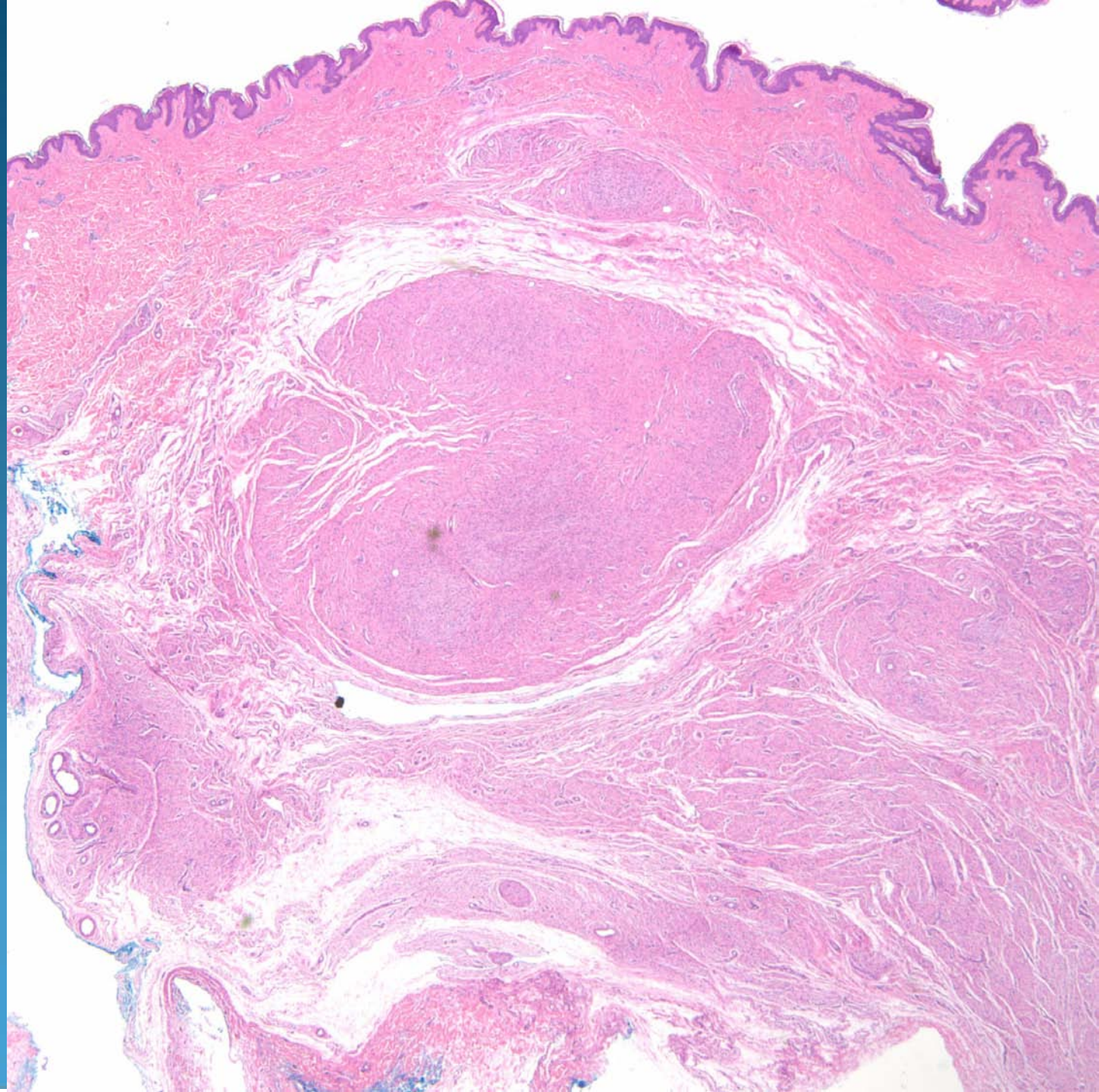


# Pearls

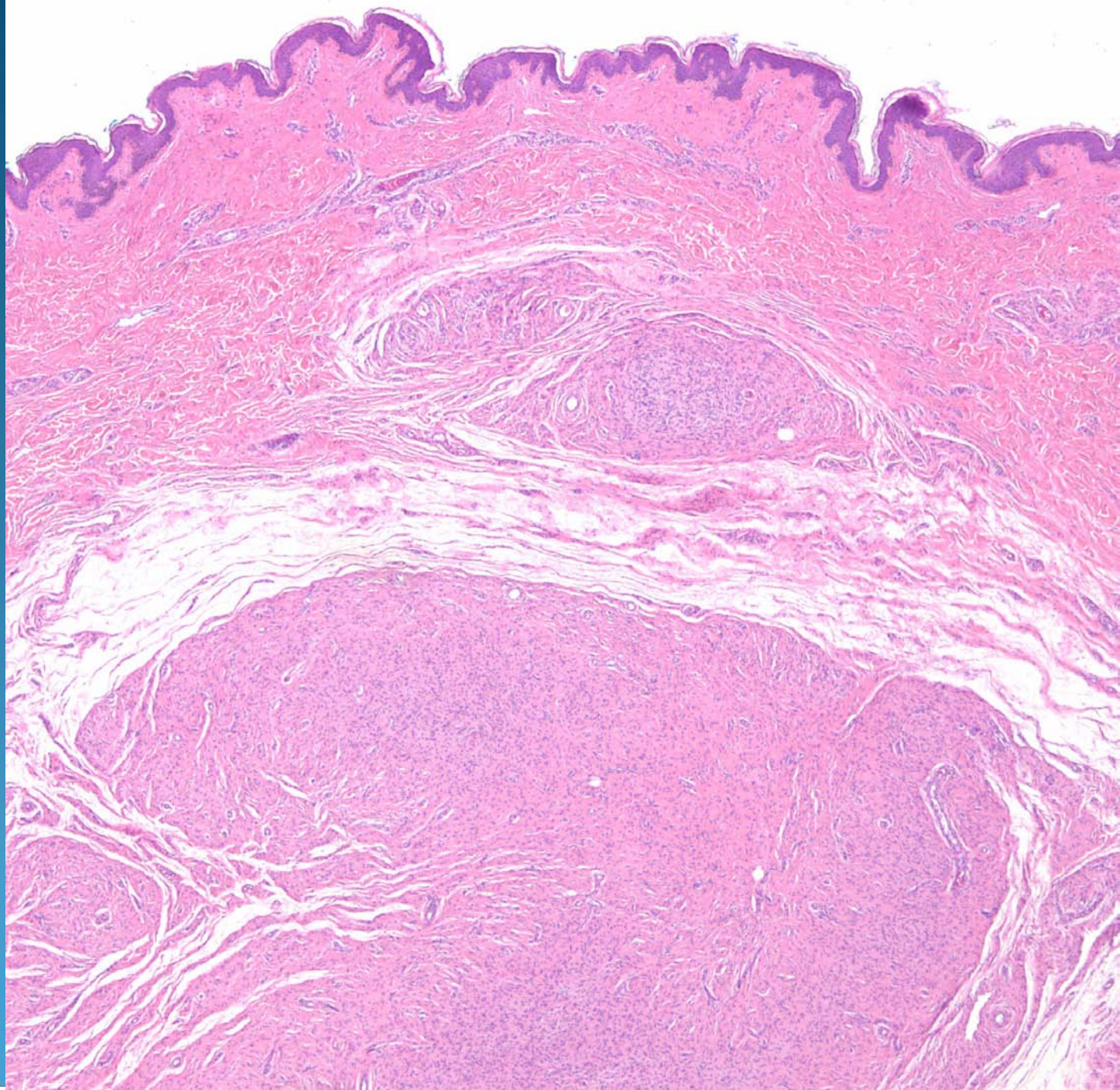


- Broad based basophilic tumor attached to epidermis
- Broad pushing front with focally infiltrative borders
- Cytologically malignant
- Hyalinized vessels

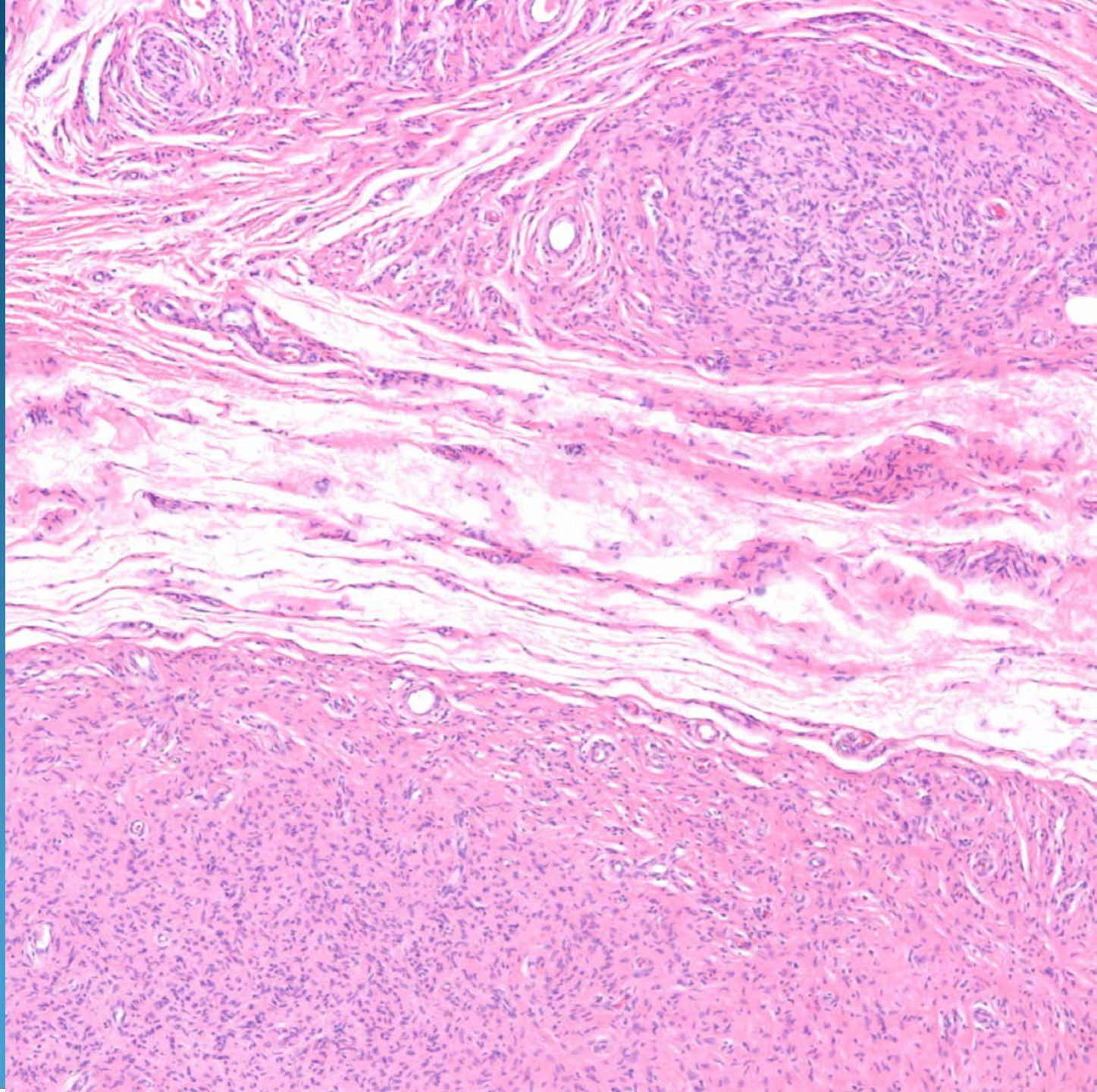




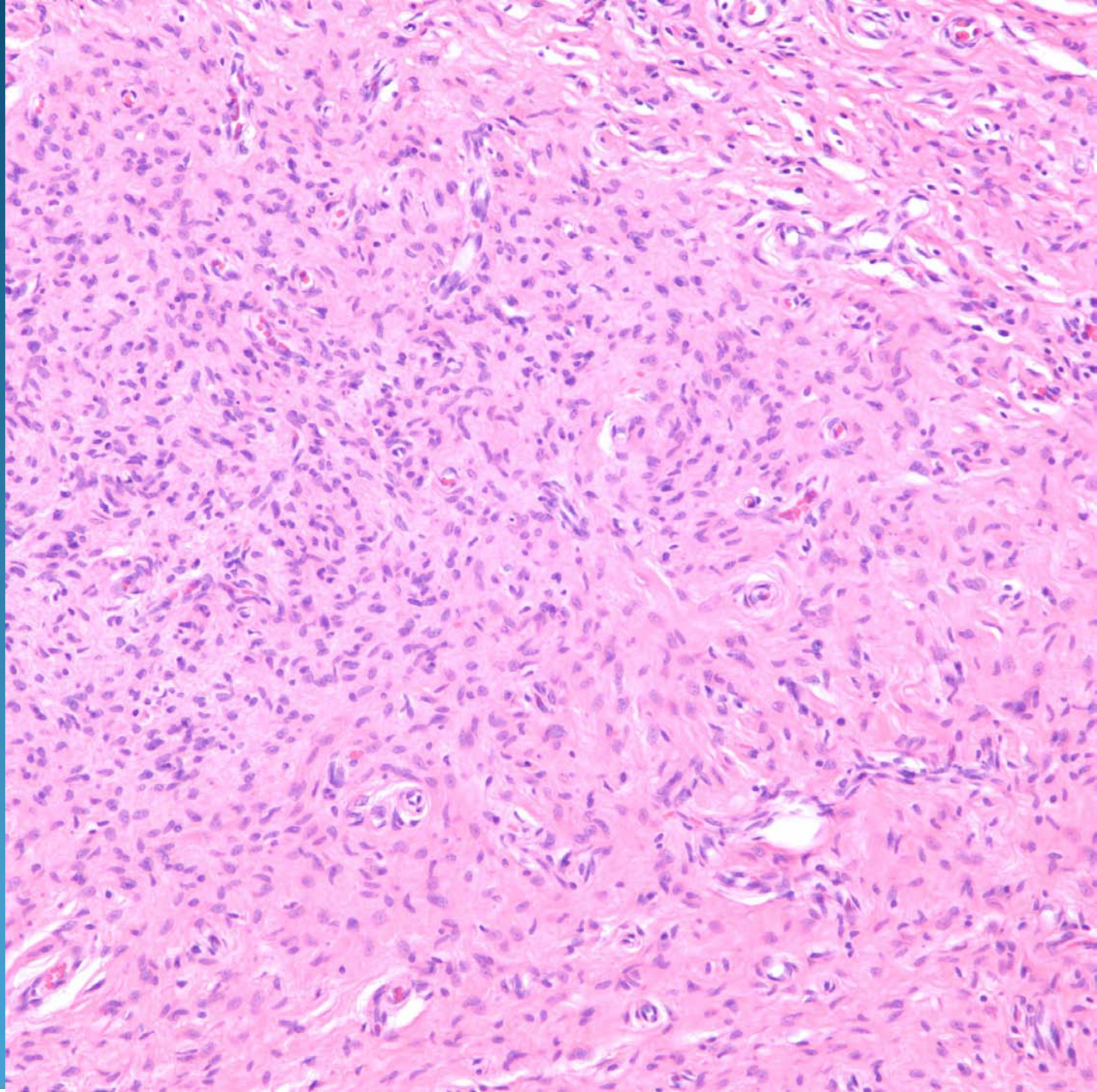




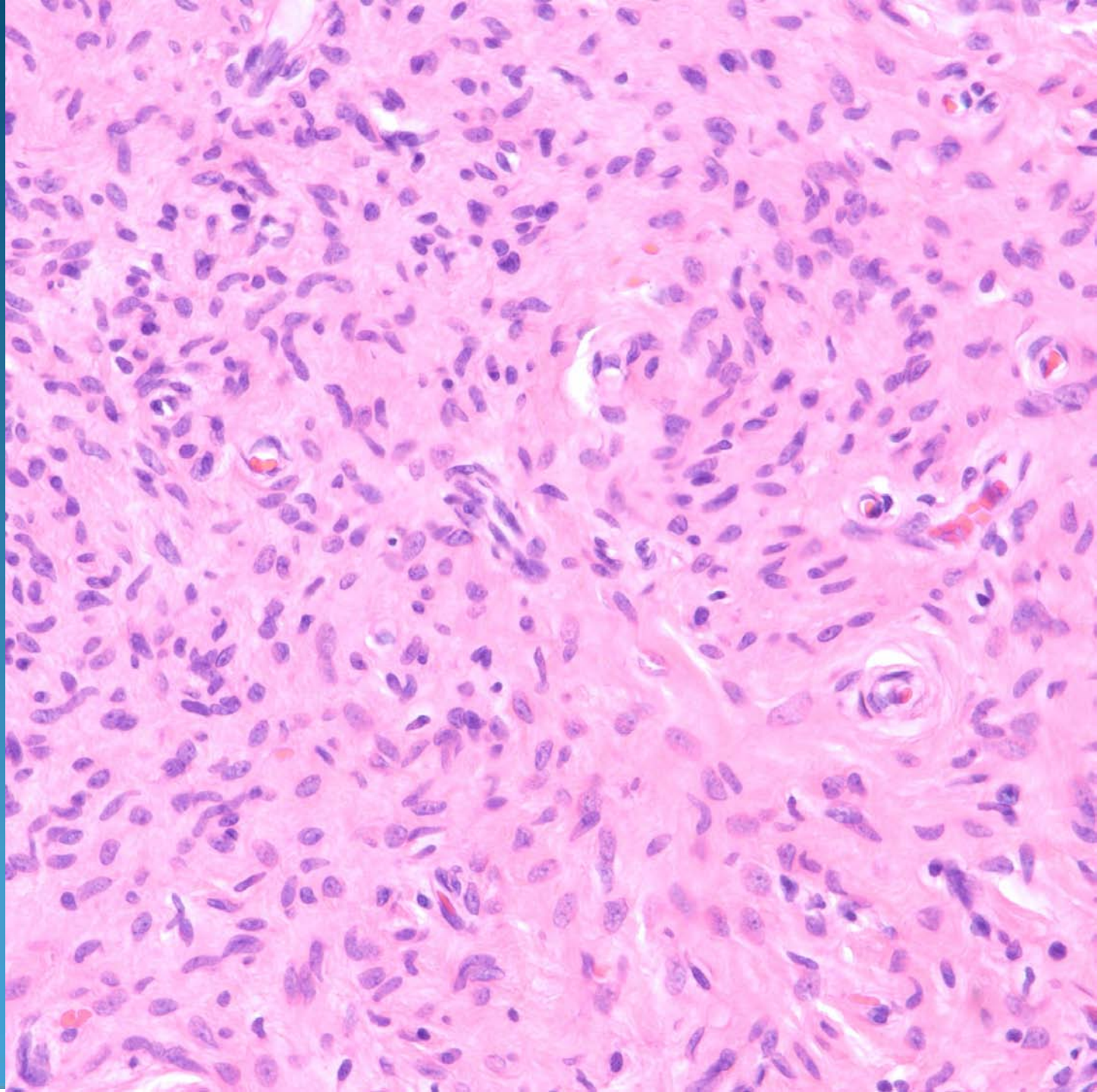










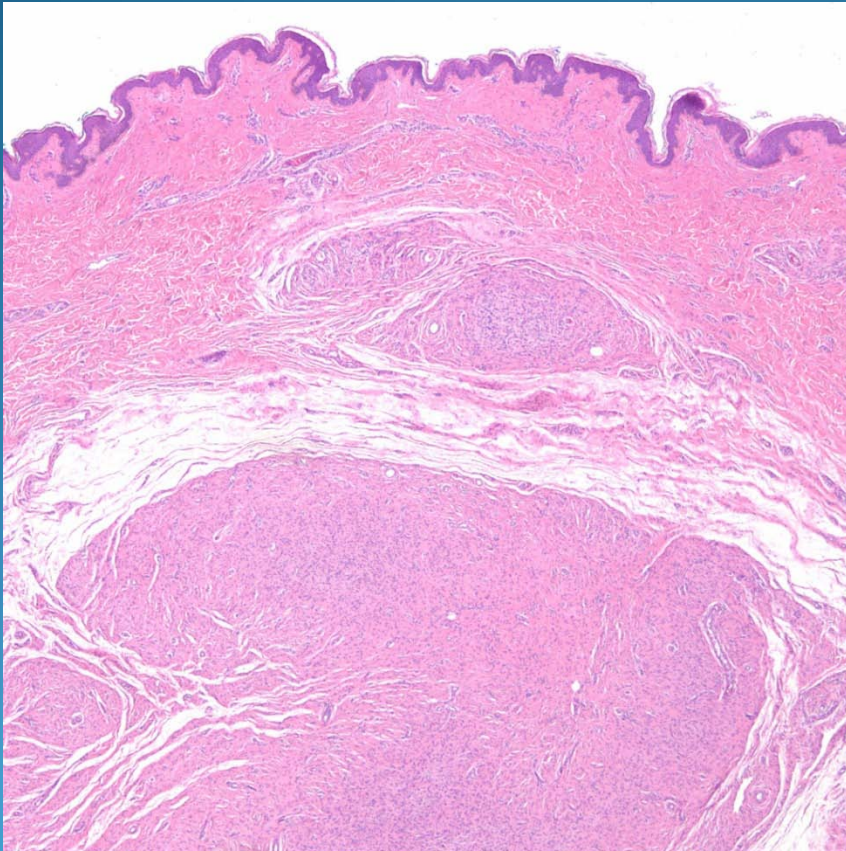




# Neurofibroma, Plexiform type

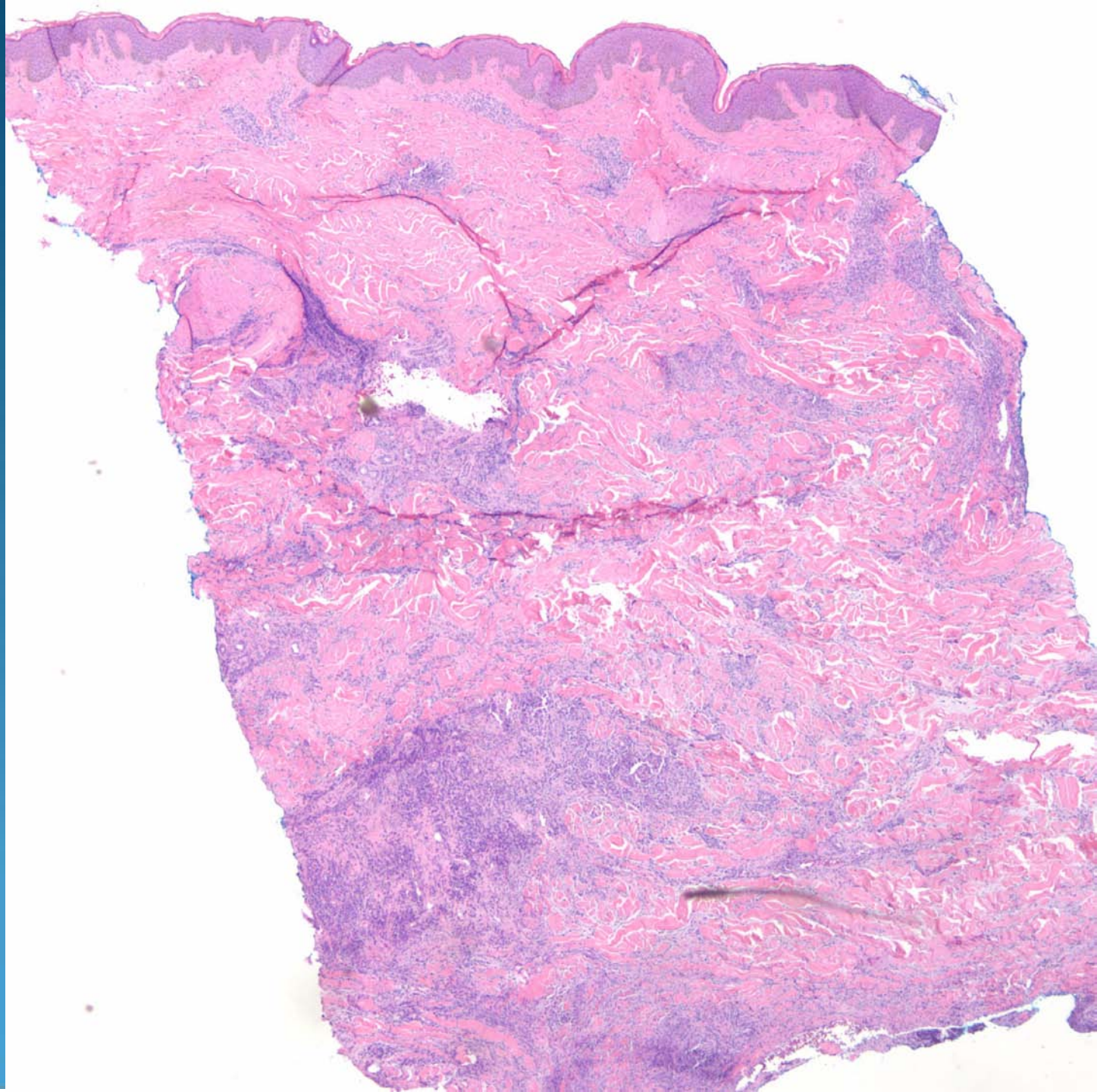


# Pearls

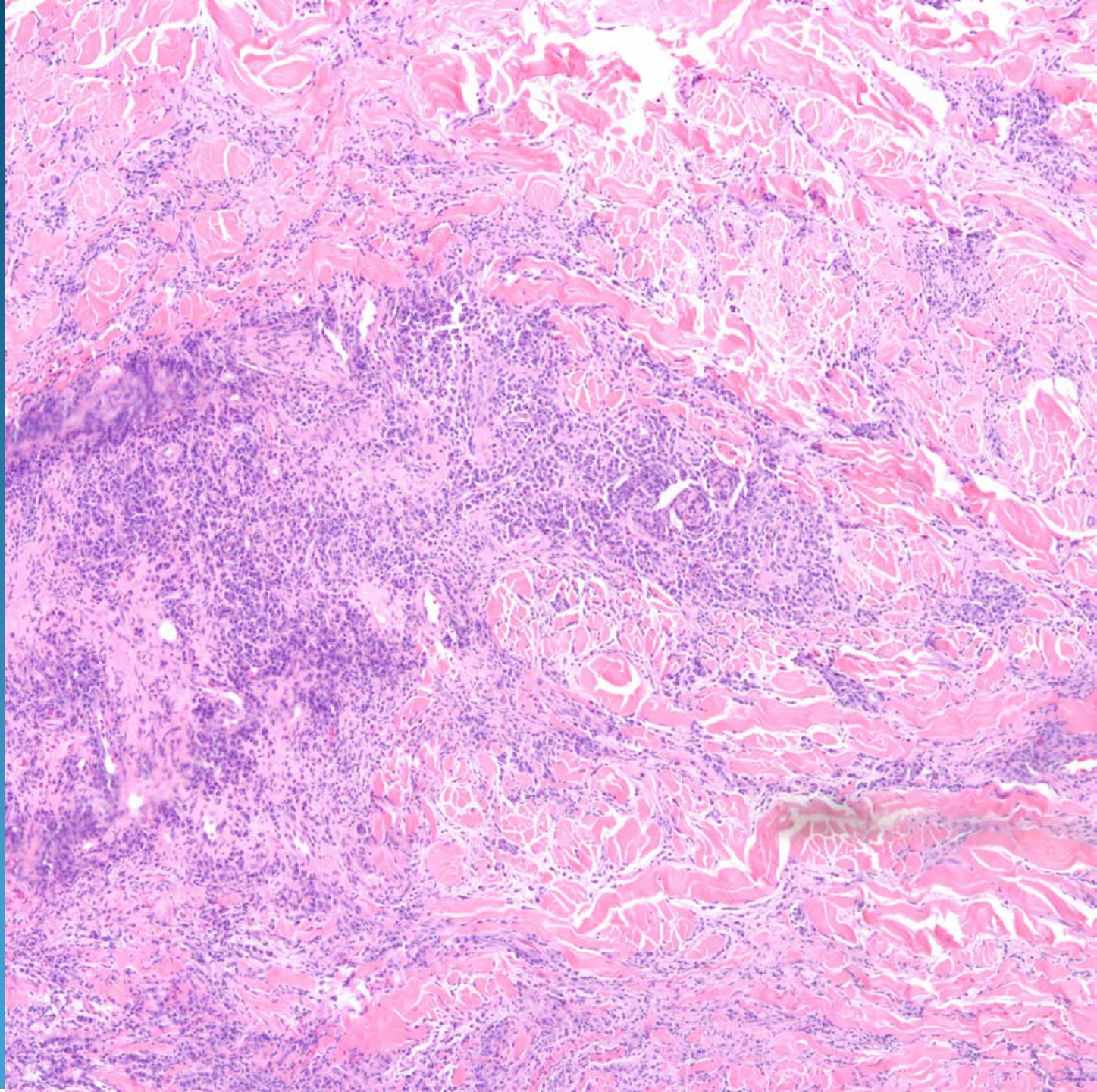


- Plexiform arrangement of spindle cells
- Characteristic wavy nuclei of Schwann cells
- Rule out clinical neurofibromatosis

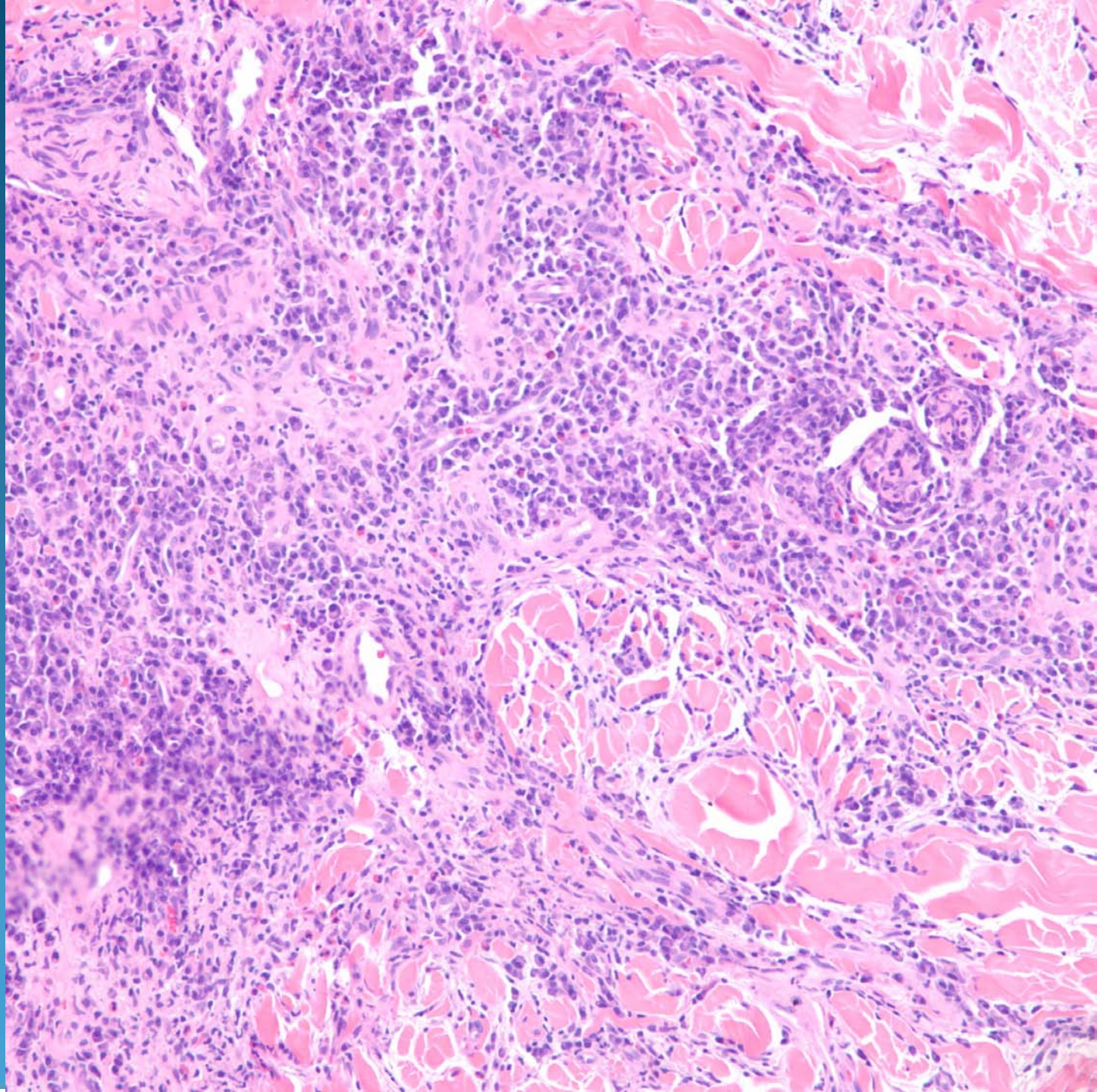




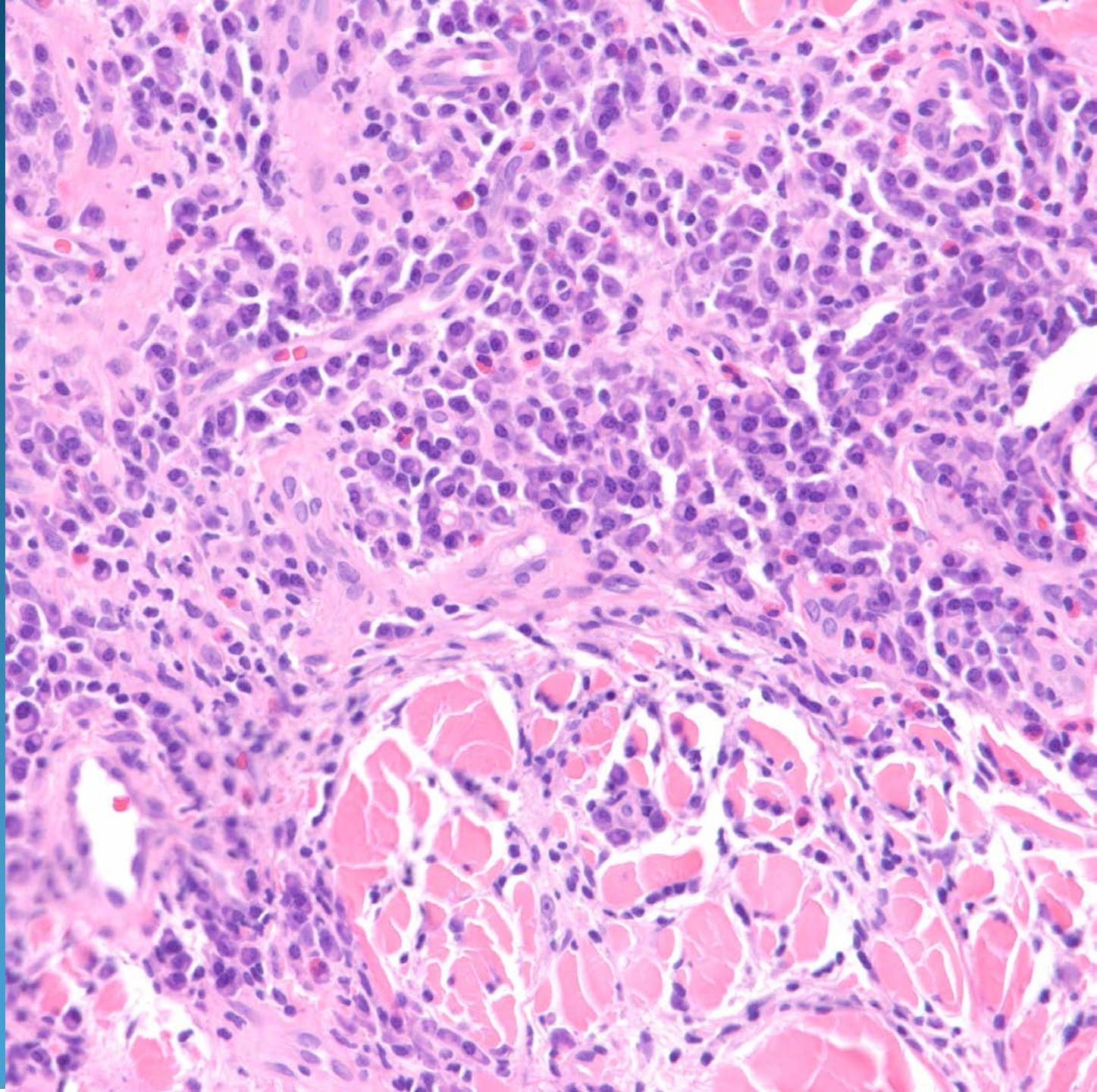




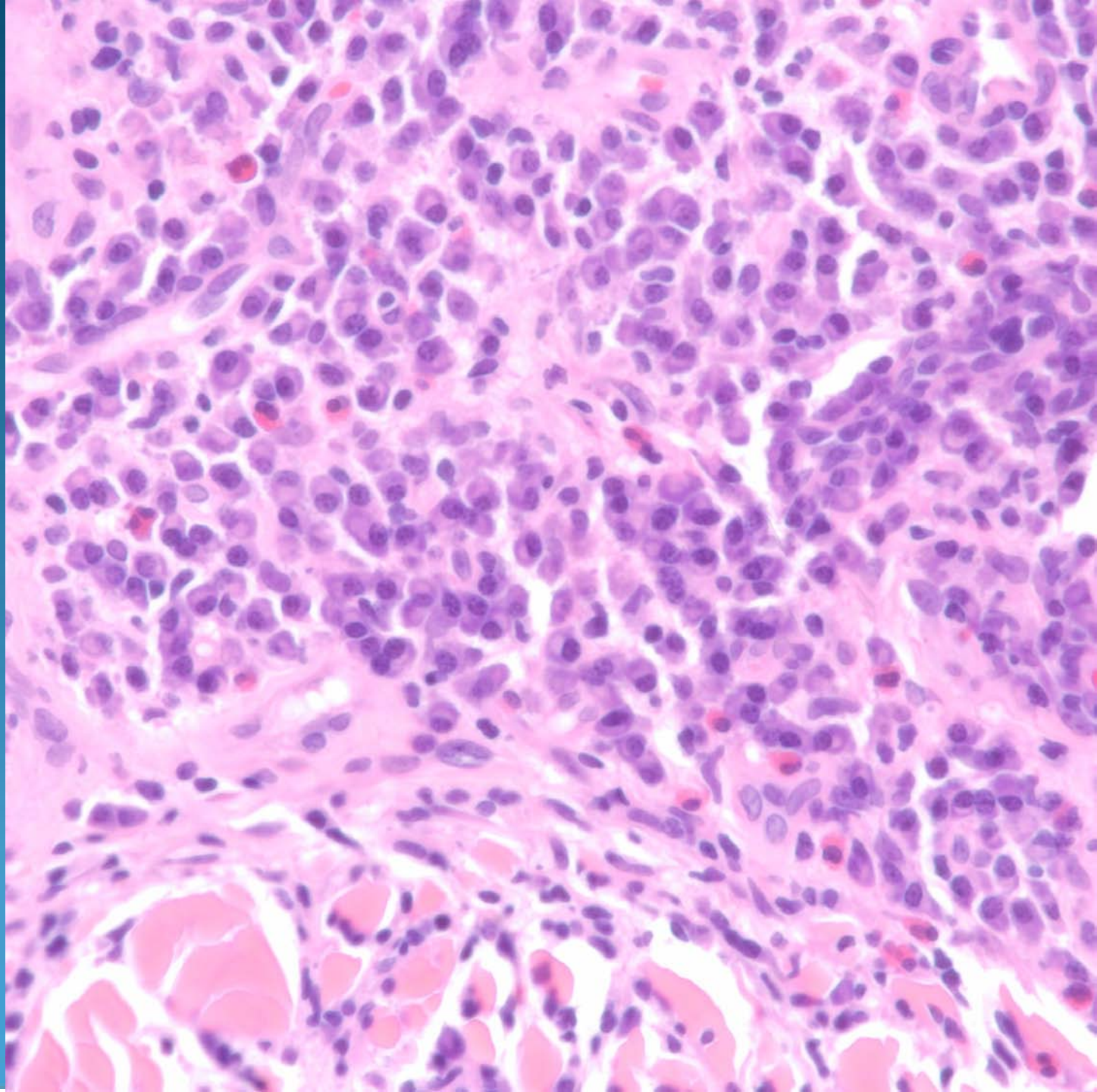






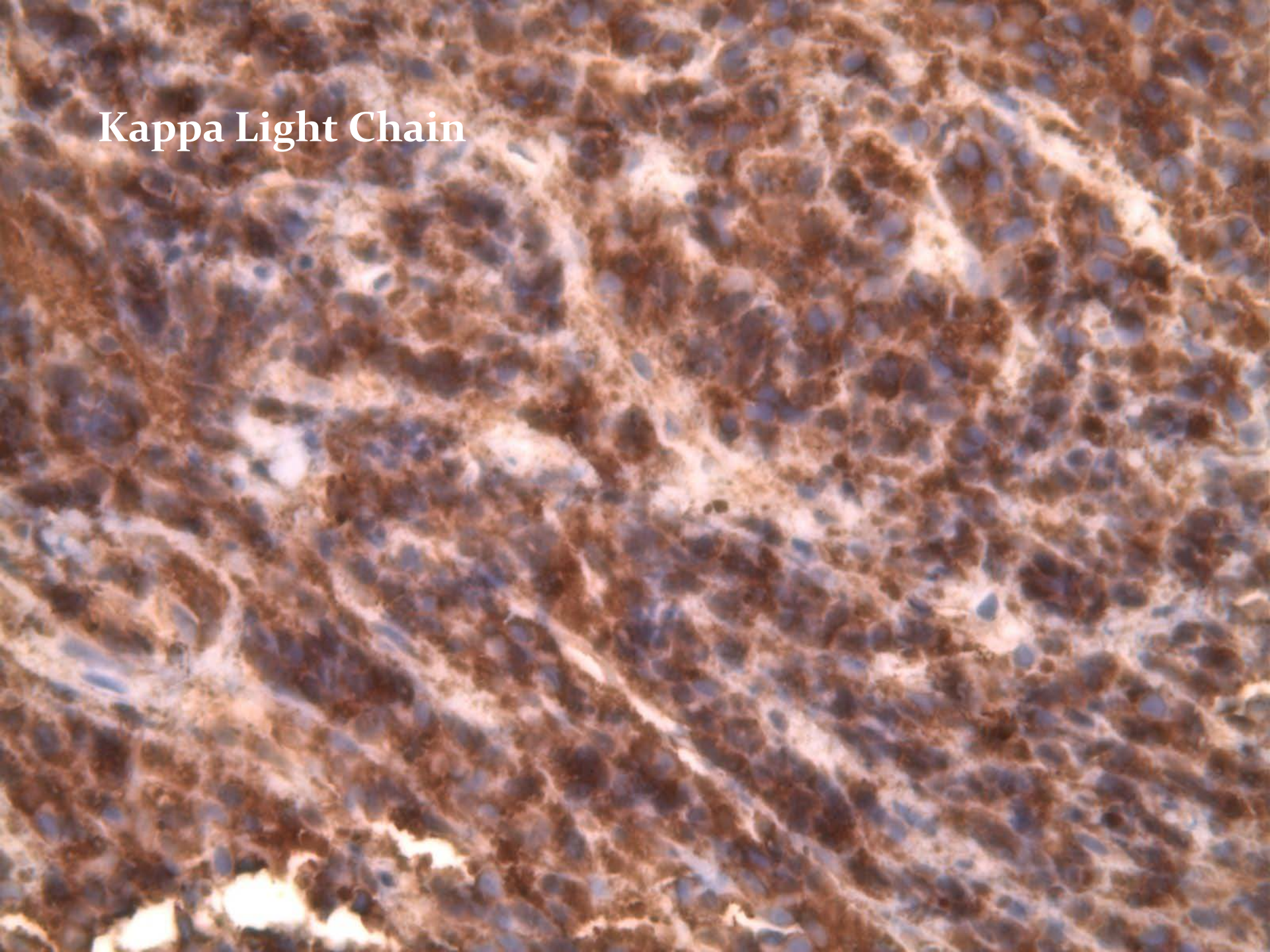








Kappa Light Chain

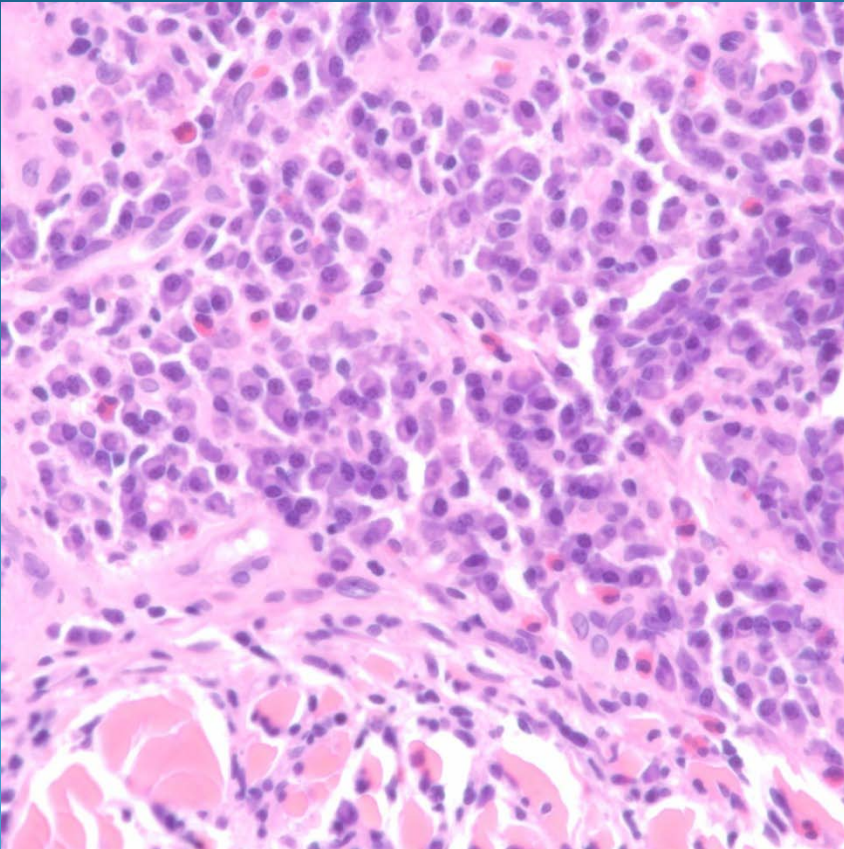




# Cutaneous Plasmacytoma

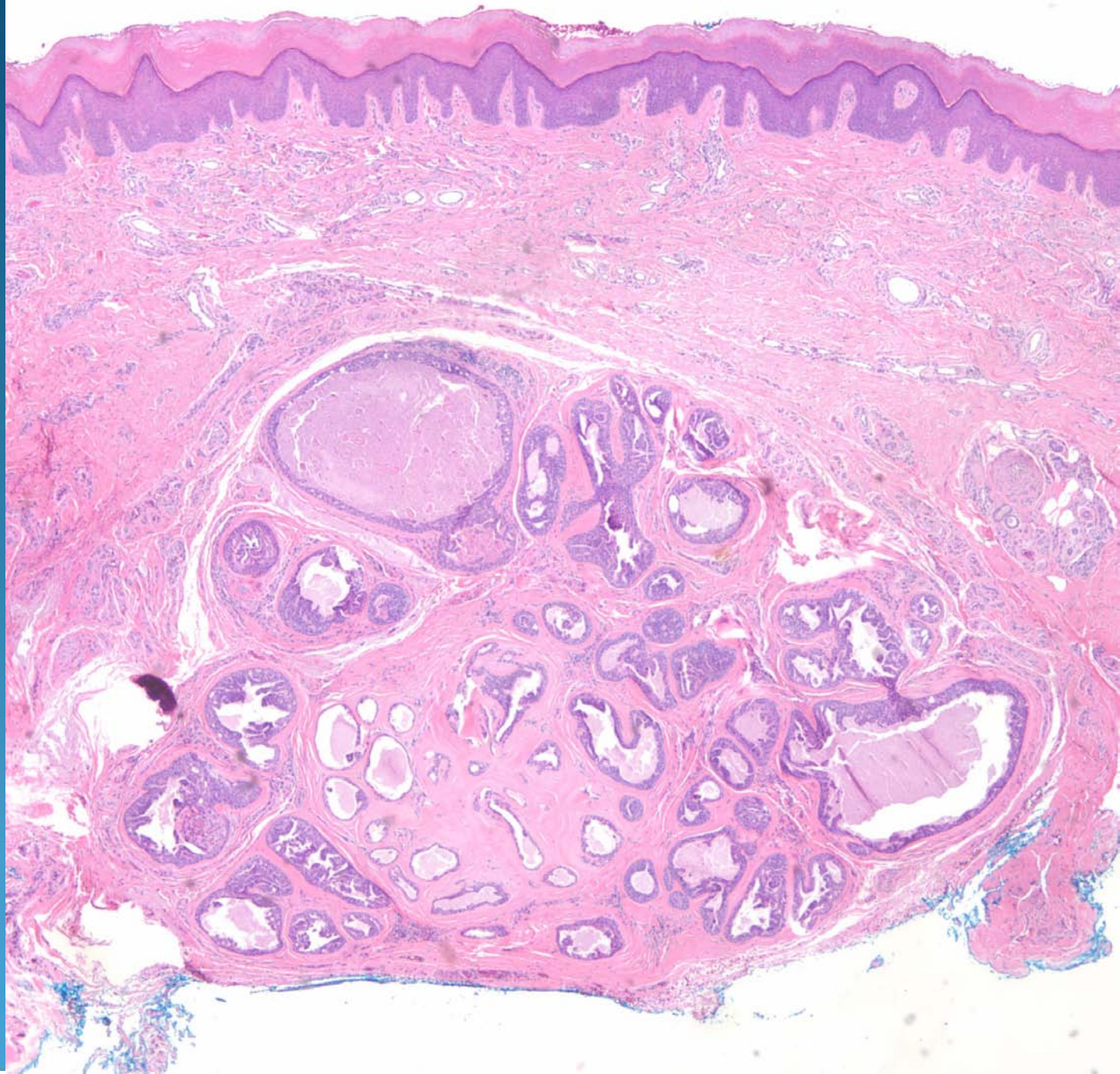


# Pearls

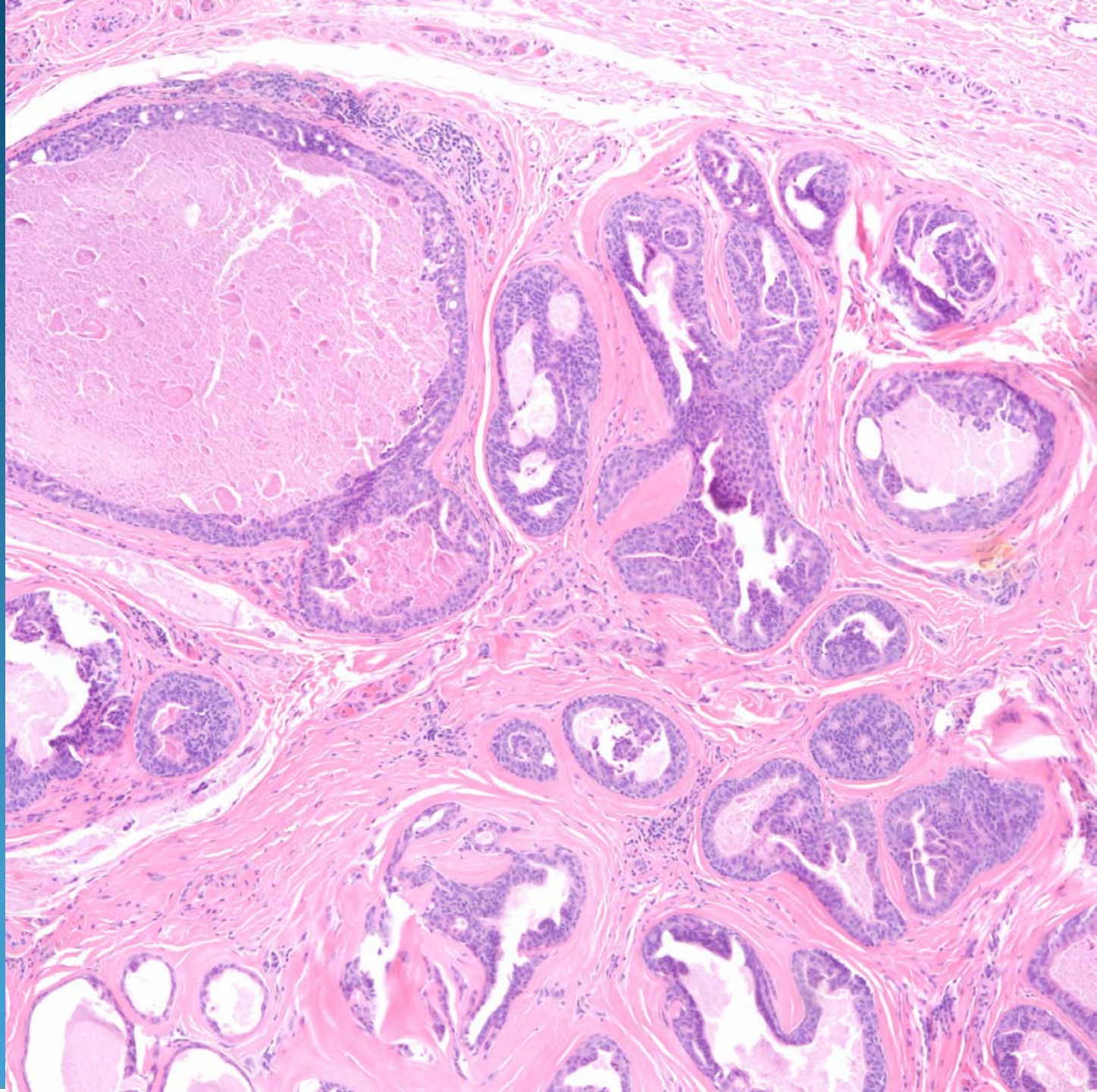


- Diffuse collection of plasma cells, of varying maturity
- Use IHC for lambda and kappa light chain to demonstrate light chain restriction
- Rule out reactive conditions: infection, inflammatory morphea, trauma

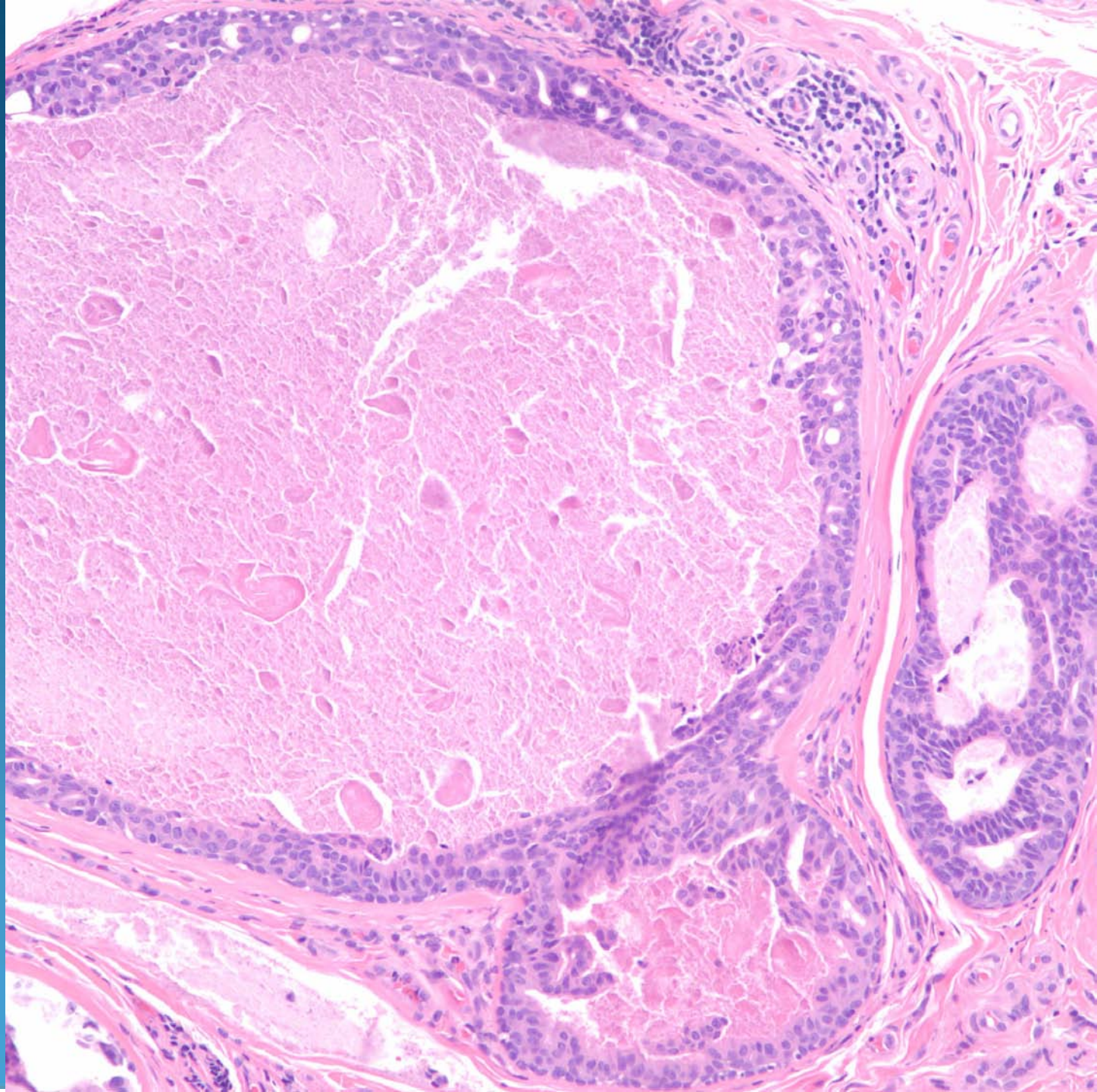




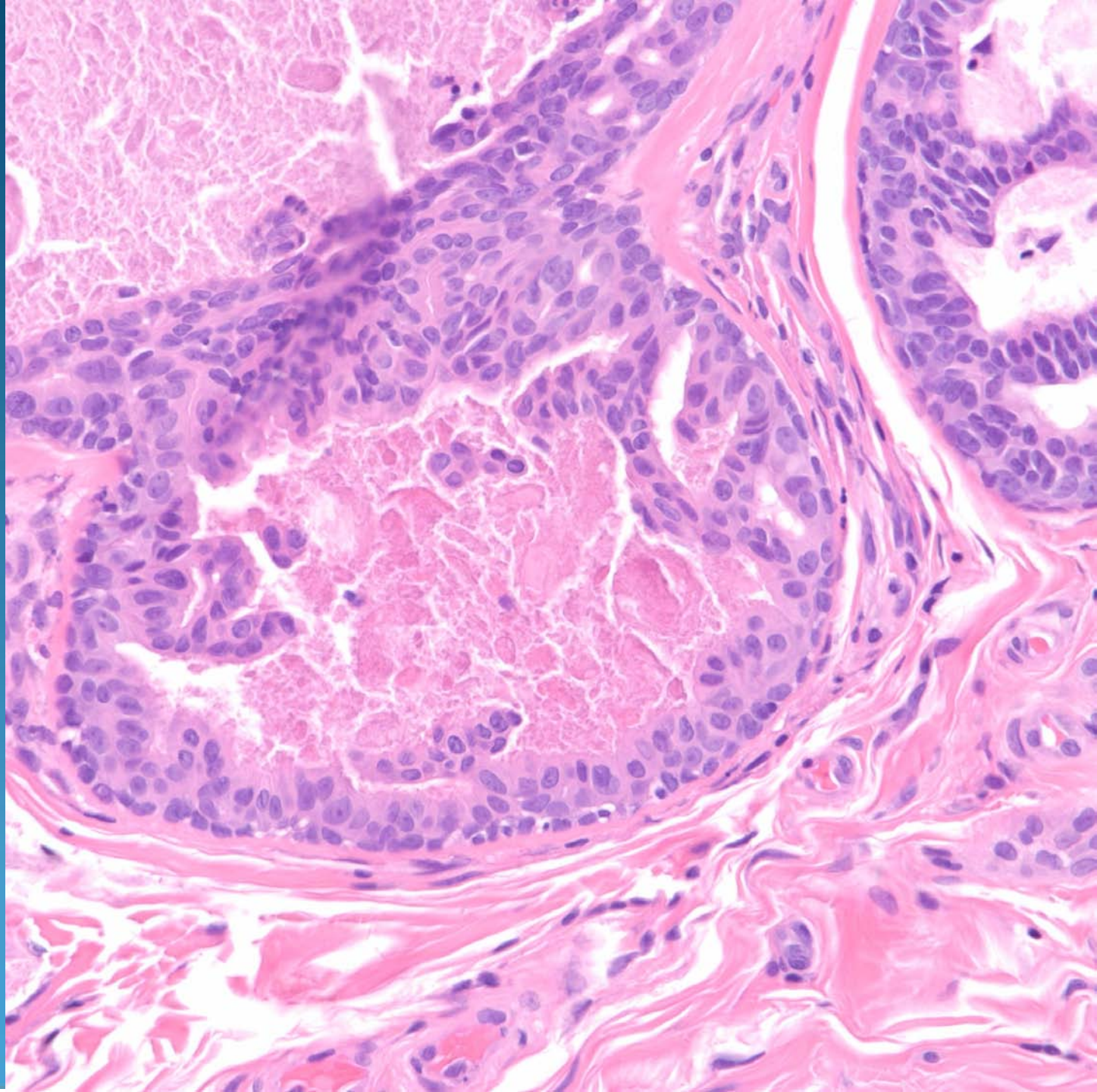










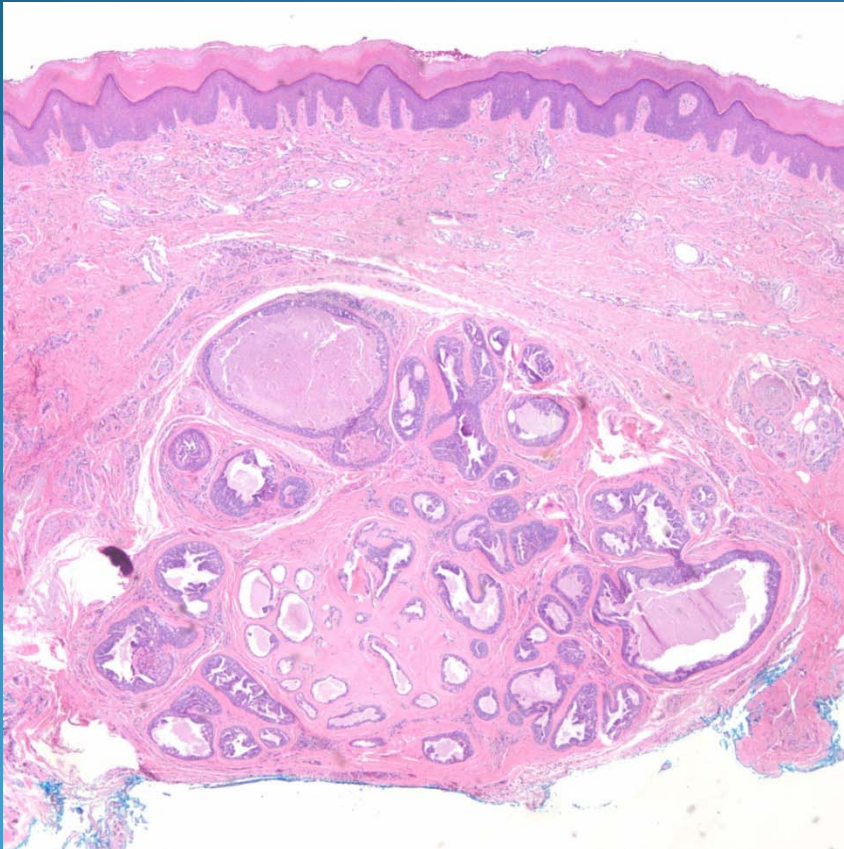




# Papillary Eccrine Adenoma

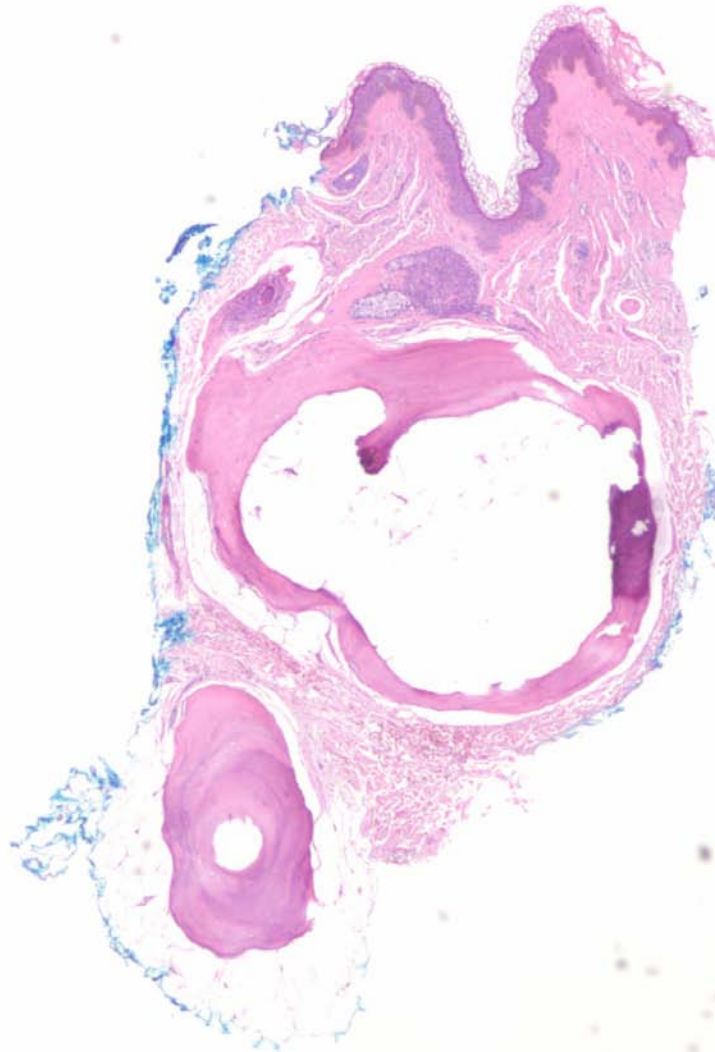


# Pearls

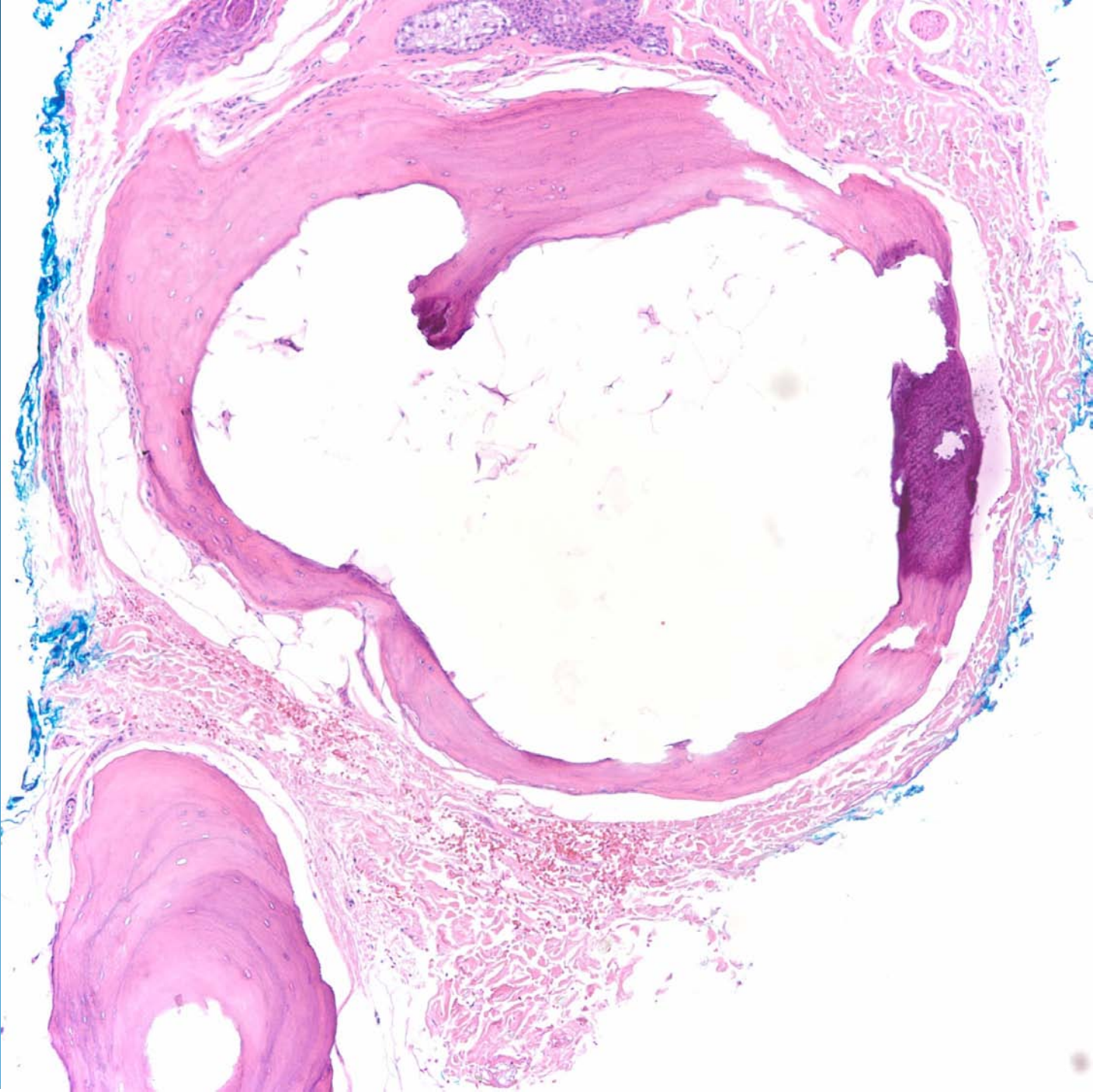


- Collection of ducts and glands with micro-papillary intraluminal projections
- May have necrosis
- Minimal cytologic atypia of epithelial cells
- Resembles DCIS of the breast

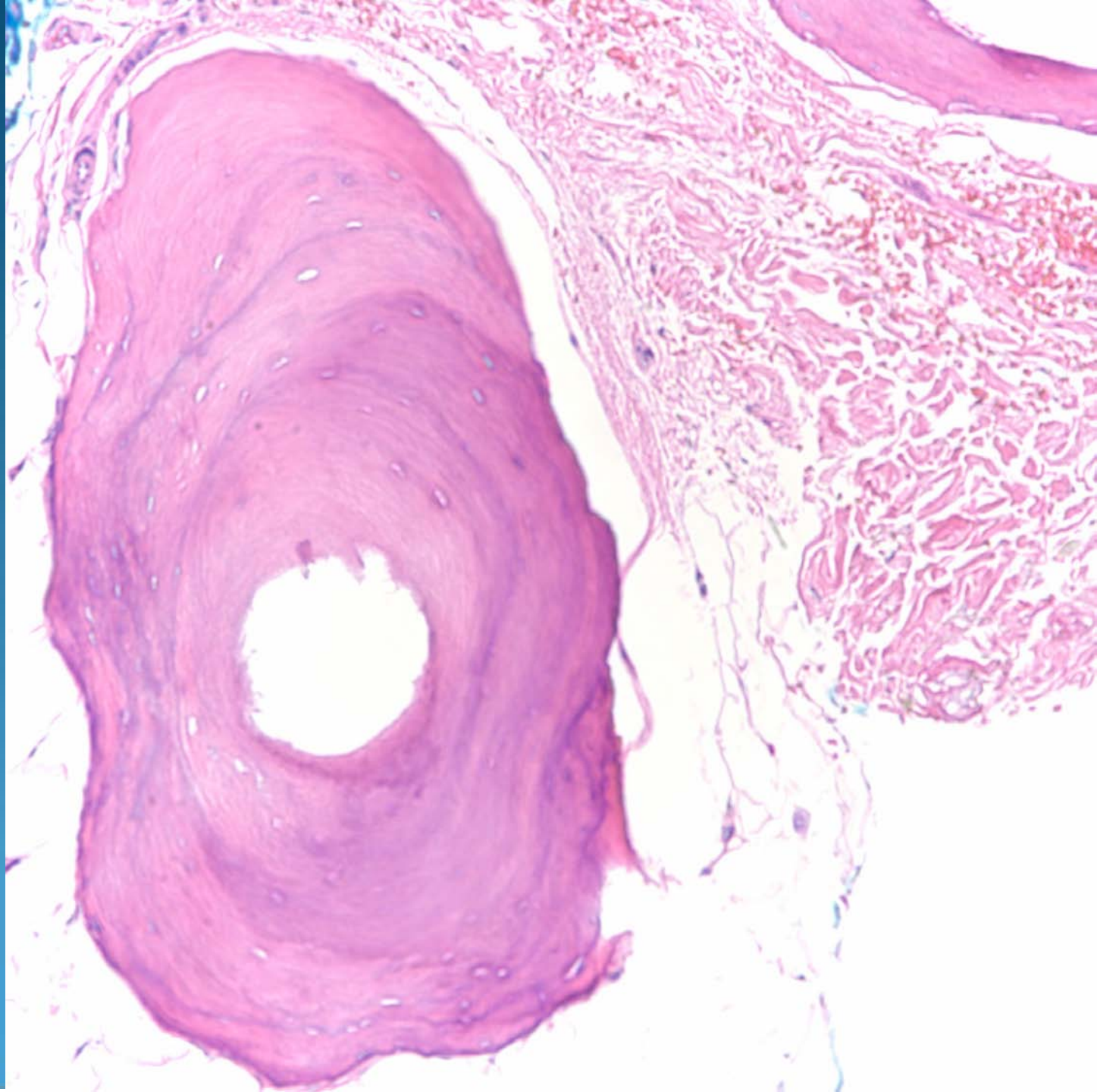




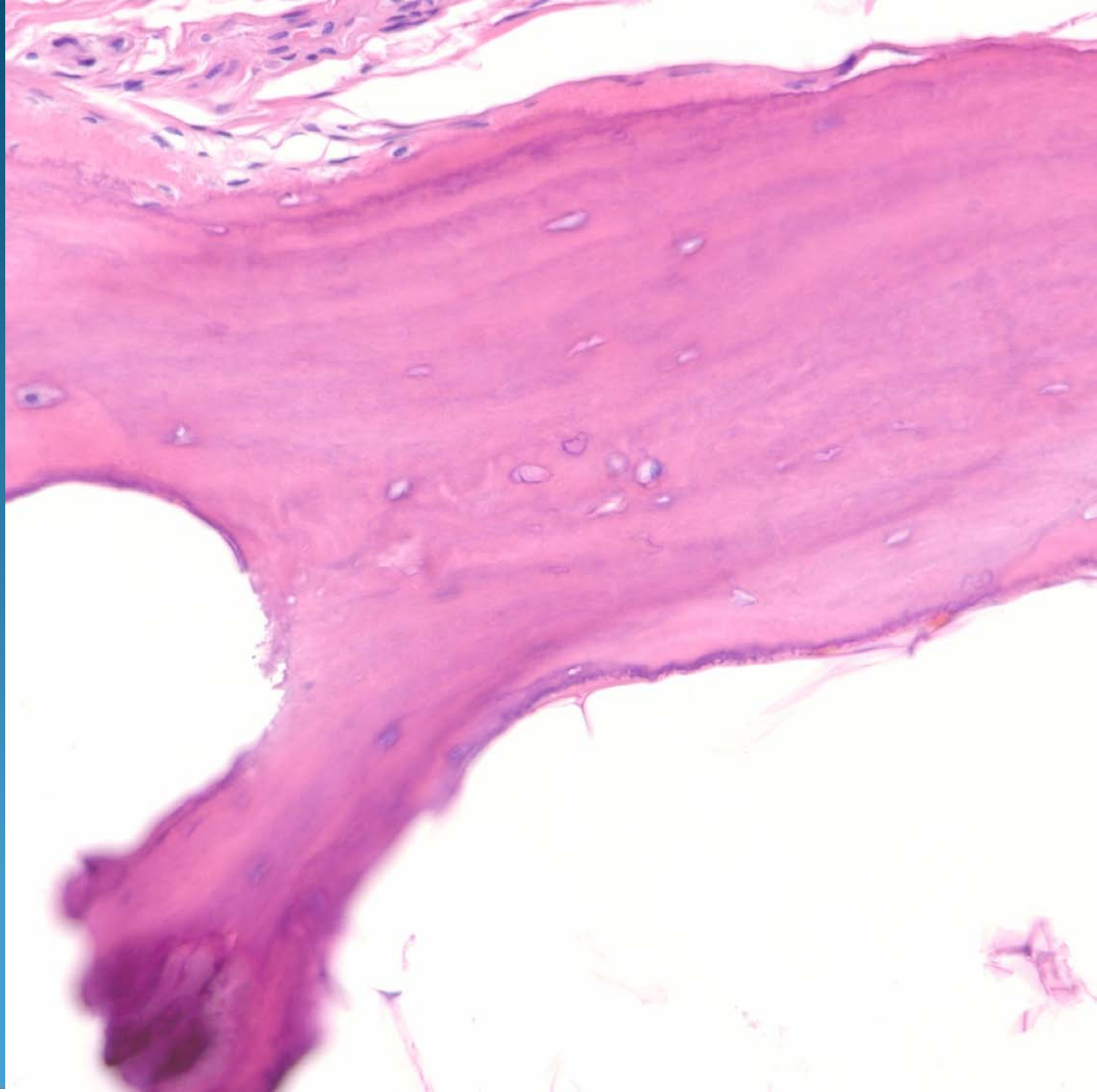










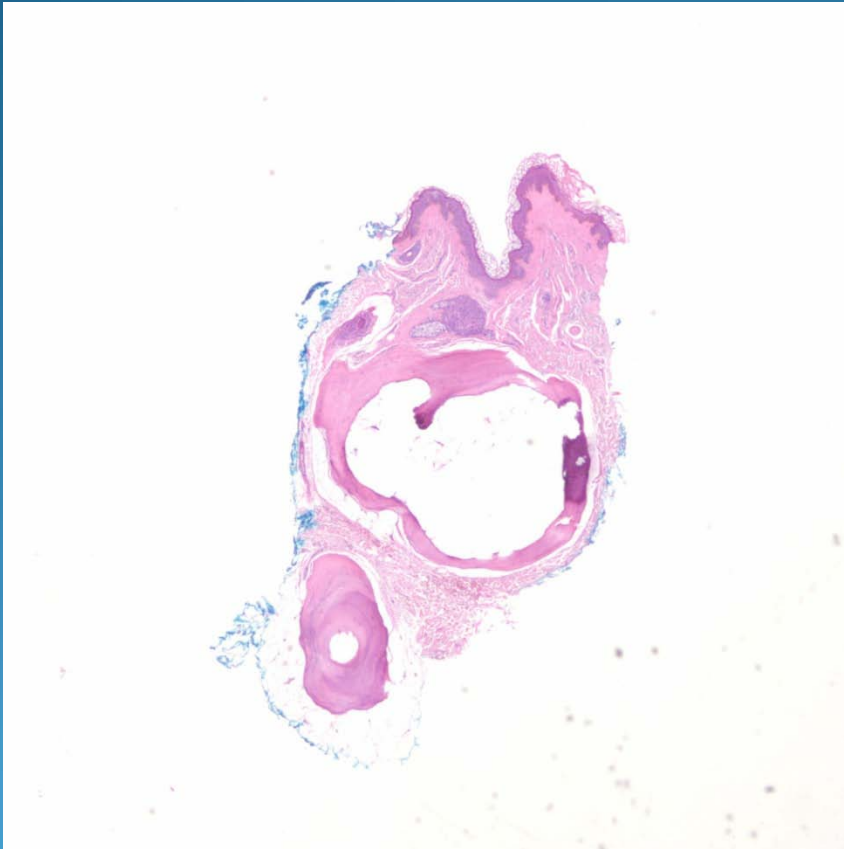




# Osteoma Cutis



# Pearls



- Mature lamellar bone in dermis
- No cytologic atypia of the osteocytes
- Variable inflammation and may have vascular changes